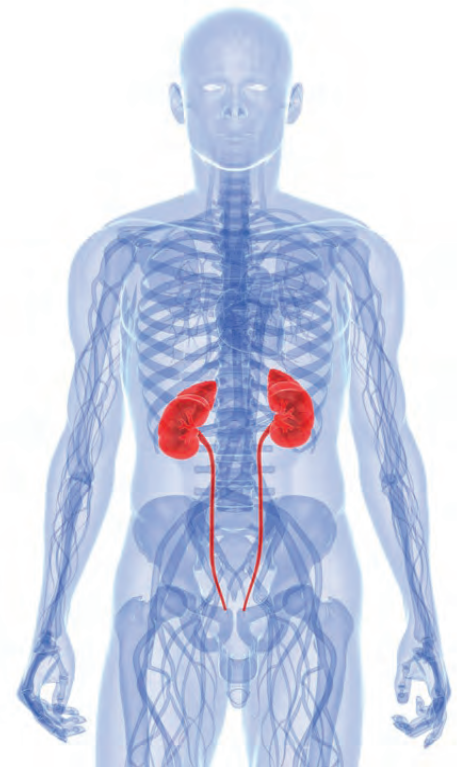
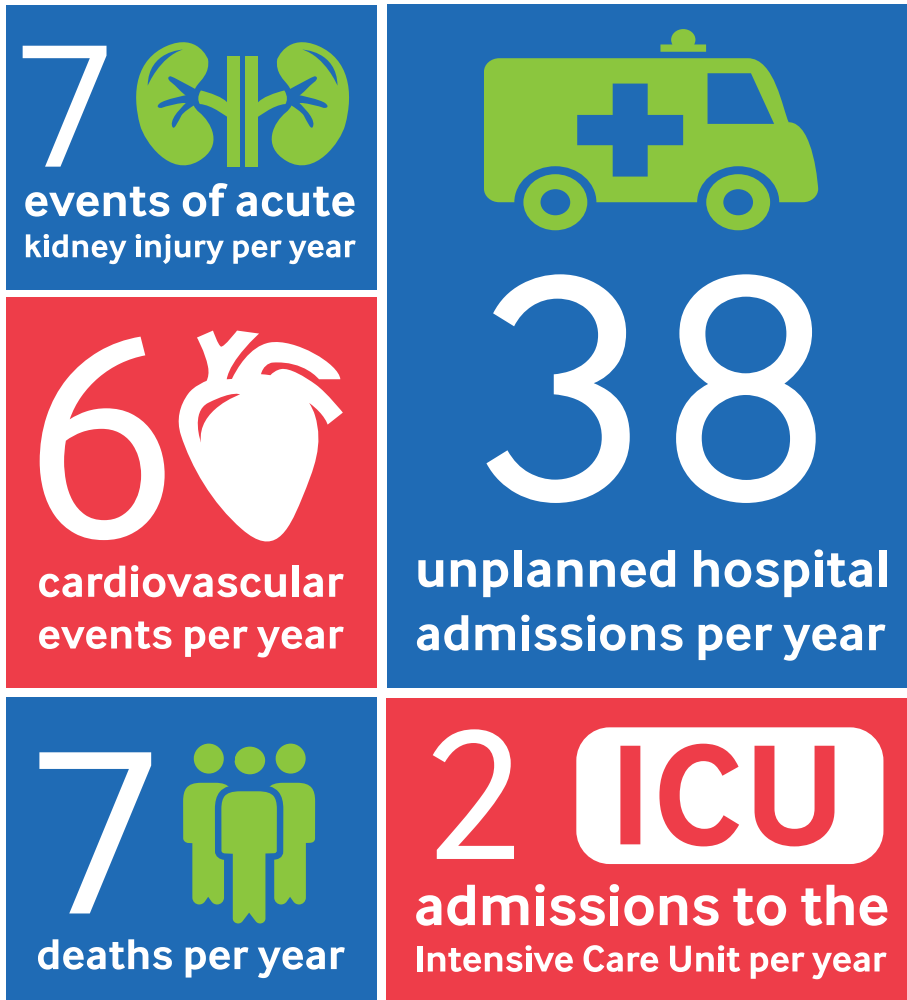


For every **100 patients** with chronic kidney disease and moderate to severe kidney function impairment there are:



[www.lshtm.ac.uk/ckdaudit](http://www.lshtm.ac.uk/ckdaudit)

The National CKD Audit aims to improve the quality of patient care for people with CKD stages 3-5 in primary care. A quality improvement tool has been implemented in England and Wales to help GPs code patients with CKD in their practices and to improve care. This tool prompts appropriate action and data collection during consultation. The generated data is then used to provide a comprehensive report of the management and outcomes for people with CKD in the region including long term follow-up with linkage to health records.

If you are considering requesting that your data not be used for this audit it is recommended that you discuss this with your local GP. If you then decide that you wish to 'opt-out' of the audit you will need to ask your GP to mark your local record as opted out. Then no further data will be shared with us, or any other national audit.

Commissioned by:



Delivered by:

